

PROGRAM OF EVENTS

OPENING RECEPTION

WELCOME AND INTRODUCTIONS

Wasył Kinach, P.E., MESC Chairman

MAYOR'S PROCLAMATION OF ENGINEERS WEEK

Salvatore Galetta, P.E., MESC Program Chair
Wasył Kinach, P.E., MESC Chairman
Peter Kontagiannis, P.E. NYC DEP

KEYNOTE ADDRESS

Gregory Homatas, P.E.

Introducing

Timothy Gianfrancesco, P.E., Vice President &
Deputy Program Executive,
MTA Capital Construction Company

"ENGINEERING CHALLENGES OF THE SECOND AVENUE SUBWAY CONSTRUCTION"

CLOSING REMARKS

Wasył Kinach, P.E., MESC Chairman



Timothy Gianfrancesco, P.E., Vice President & Deputy Program Executive, MTA Capital Construction Company

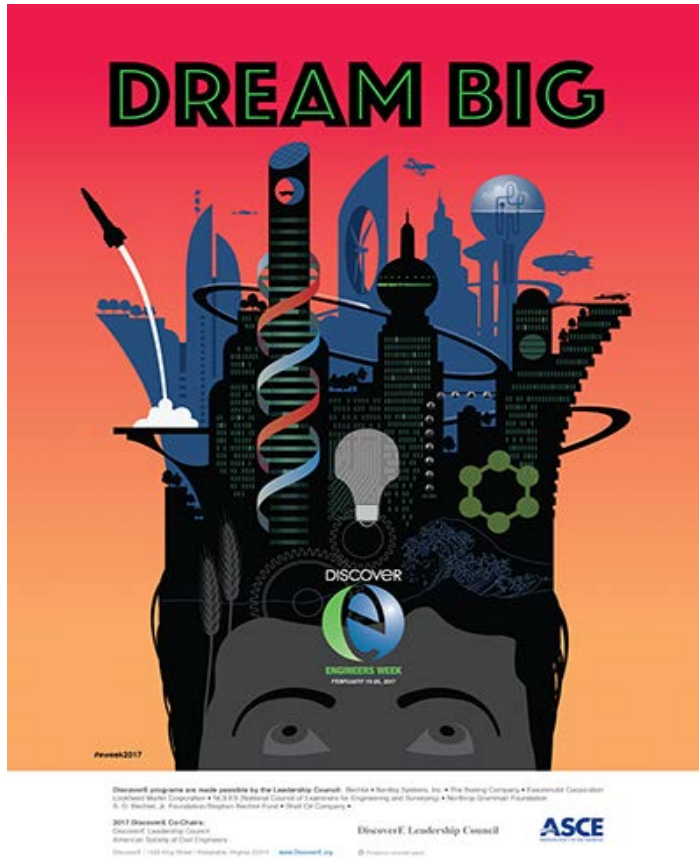
Tim Gianfrancesco has been instrumental in the continued success of the Second Avenue Subway (SAS) mega project, whose full length will provide New York City subway riders with substantially improved transit, including 16 new stations and service extending 8.5 miles along Manhattan's East Side from East Harlem to Lower Manhattan. As Acting Senior Vice President and Program Executive of SAS Phase 2 at MTA Capital Construction, Mr. Gianfrancesco is leading the planning and building of three new stations that will extend Q train service to East Harlem from the current 96 Street terminus completed on SAS Phase 1. In 2014 Mr. Gianfrancesco was Vice President at MTA Capital Construction in charge of the engineering and construction of SAS Phase 1, which

opened for service on schedule in December 2016. Mr. Gianfrancesco, who joined the MTA/New York City Transit (NYCT) Engineering and Construction department in 1989, managed the TBM tunnel contract and over \$200 million of street utility work to construct Phase 1, and led the effort to construct and energize nine medium-voltage (13.2KV) substations to provide facility and traction power to the new subway stations and tunnels.

Previously, as head of NYCT's Civil Structural Core – Subsurface and Utility Engineering group, he led the design of the underground utility and street restoration efforts needed to rebuild the 1&9 Subway tunnel after the September 11 attacks and construct the new South Ferry Station.

Mr. Gianfrancesco received a B.S. in Civil Engineering from Manhattan College and is a practicing Professional Engineer in the state of New York. He is a member of *Chi Epsilon*, has participated in high school mentoring programs and received ASCE's Young Government Engineer award.

After a brief introduction about MTACC's \$20 Billion dollars of projects in a dense urban environment like NYC, Mr. Gianfrancesco will speak about the experiences of planning, and building the first phase of the Second Avenue Subway, including several detailed engineering considerations. He will talk about challenges faced in its execution and give a brief overview of the next steps in implementing its following phases.



SPECIAL THANKS TO OUR SPONSORS

ARUP, AECOM, HAKS
 Mueser Rutledge Consulting Engineers;
 Kiewit Infrastructure Co.;
 EnTech Engineering, P.C.;
 STV Incorporated
 D & B Engineers and Architects;
 K.C. Engineering and Land Surveying, P.C.

**METROPOLITAN ENGINEERING SOCIETIES COUNCIL
 •MEMBER ORGANIZATIONS •**

- American Engineering Alliance
- American Institute of Aeronautics and Astronautics
- American Institute of Chemical Engineers
- American Nuclear Society
- American Society of Civil Engineers
- American Society of Energy Engineers
- American Society of Heating, Refrigeration and Air Conditioning Engineers
- American Society of Mechanical Engineers
- American Society of Plumbing Engineers
- American Society of Safety Engineers
- Association for Facilities Engineering
- Association for the Advancement of Cost Engineering
- Association of Energy Engineers
- Illuminating Engineering Society
- Institute of Civil Engineers
- Institute of Electrical and Electronics Engineers
- Institute of Industrial Engineers
- Municipal Engineers of the City of New York
- National Association of Corrosion Engineers
- New York Academy of Sciences
- New York State Society of Professional Engineers
- Society of American Military Engineers
- Society of Automotive Engineers
- Society of Fire Protection Engineers
- Society of Indo-American Engineering and Architects
- Society of Women Engineers

•OFFICERS•

Chairman..... Wasyl Kinach, PE
 Vice Chairman..... Joel Kirman, PE
 Treasurer.....April Leyla Berkol
 Secretary..... Otto Maatsch, PE

METROPOLITAN ENGINEERING SOCIETIES COUNCIL

ENGINEERS WEEK RECEPTION



FEBRUARY 19-25, 2017

VISIT OUR WEBSITE AT WWW.MESCNYC.ORG

JOIN OUR E-MAIL LIST AT
 "MESC-EVENTS@YAHOOGROUPS.COM"
 MESC'S E-MAIL: INFO@MESCNYC.ORG

**District Council 37 (AFSCME AFL-CIO) HQ,
 125 Barclay St.
 Thursday, February 16, 2017**